

TYPICAL APPLICATIONS

RV maceration. This pump is for intermittent duty only. This pump is not listed for potable water use. This pump may be used for general water transfer. For other applications, contact SHURflo.

PUMP

Type Flexible impeller
 Ports Inlet: 1-1/2" Barb and NPT-M
 Outlet: 1" Barb
 Liquid 130 °F [54 °C] Max
 Prime 4 feet [2.7 M]
 Run Dry 2 minutes. Not Recommended.

ELECTRICAL

Motor 12VDC Permanent Magnet, Intermittent Duty
 Protection Thermal Overload, Automatic Restart
 Leads 14 AWG, 12" [31 cm]
 Fuse 20 Amp Recommended
 Control None.

MATERIALS

Housings Phenolic, Nylon
 Impeller Polyurethane
 Hardware Stainless Steel

APPROVALS

CSA, ISO 8846, meets 33CFR 183.410 ignition protection

WARRANTY

1 Year Limited Warranty
 See 911-566 For Full Warranty Details

SHIPPING

Net Weight (Boxed) 6 Lb [2.7Kg] each
 Carton Weight 6 each, 36 Lb [17 Kg]
 Carton Size 24"L x 18"W x 6"H
 [61cm x 46cm x 15cm]

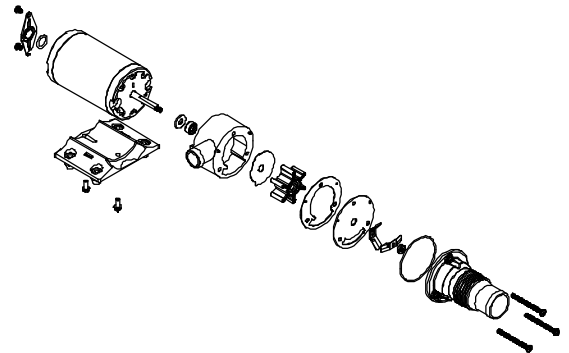
RELATED DOCUMENTS

Catalog MS-030-083
 Installation Manual 911-566
 Maintenance 911-566
 Applications Spec Guide MS-020-005
 Warranty SB-1041

Macerator



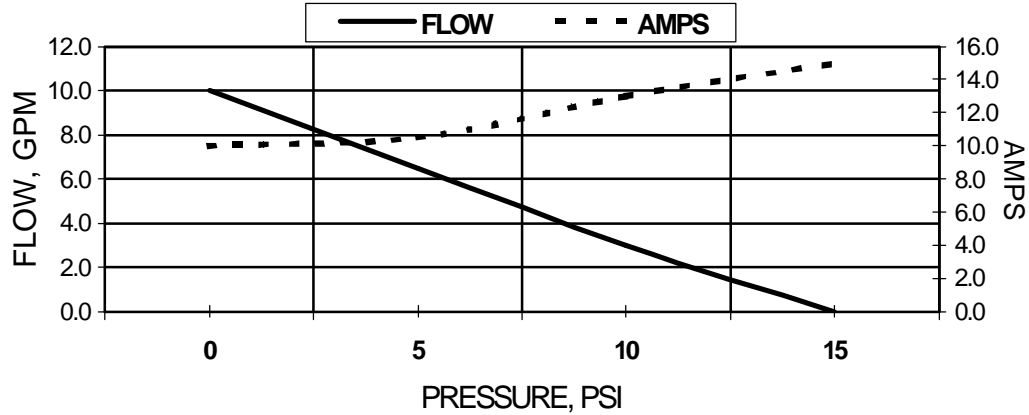
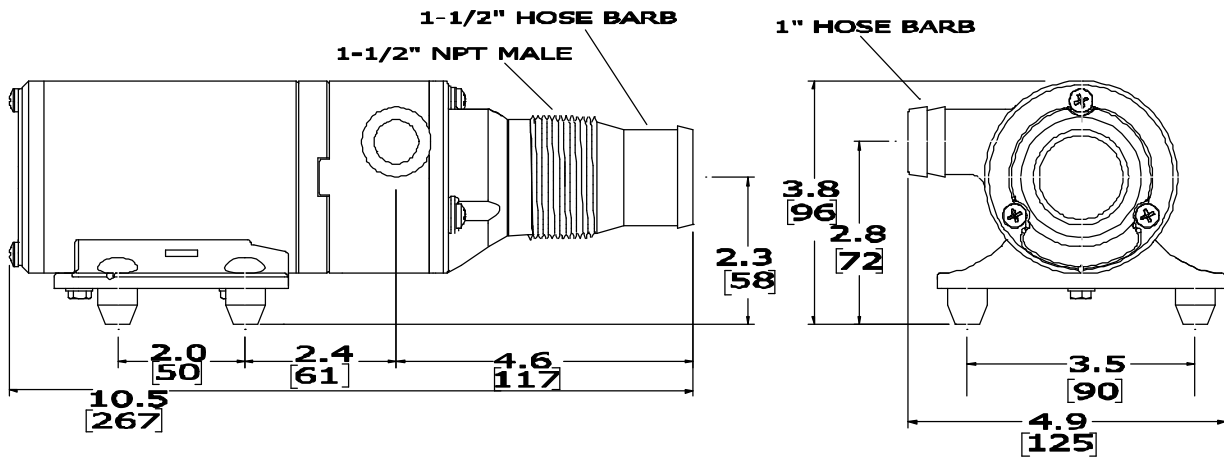
Parts Kits



Kit Number	Component
94-571-00	Impeller Kit (1 pc)
94-570-00	Pump Head Kit
94-570-01	Gasket Kit (10 pcs)
94-570-02	Cutter Blade Kit
94-570-03	Impeller Kit (10 pcs)
94-570-04	Lip Seal Kit

Typical Performance

PRESSURE		FLOW		CURRENT
BAR	PSI/Ft. Head	GPM	LPM	AMPS
0.0	0/0	10	37	10
0.34	5/11.5	6.5	24.6	10.5
0.68	10/23	3	11.3	13
0.71	10.5/24	2	7.5	13.7
Blocked	Blocked	0	0	15


Typical Dimensions


SHURflo reserves the right to update specifications, prices, or make substitutions.

SHURflo, LLC Headquarters
 5900 Katella Avenue
 Cypress, California 90630
 Phone (562) 795-5200 Toll Free (800) 854-3218
 Fax (562) 795-7554

SHURflo, LLC East
 52748 Park Six Court
 Elkhart, Indiana 46514-5427
 Phone (562) 795-5200 Toll Free (800) 854-3218
 Fax (574) 264-2169

SHURflo Europe, Middle East, Africa
Pentair Water Belgium bvba,
 Industriepark Wolfstee, Toekomstlaan 30
 B-2200 Herentals, Belgium
 Phone +32-14-283500 Fax +32-14-283505

© 2006 SHURflo, LLC All Rights Reserved